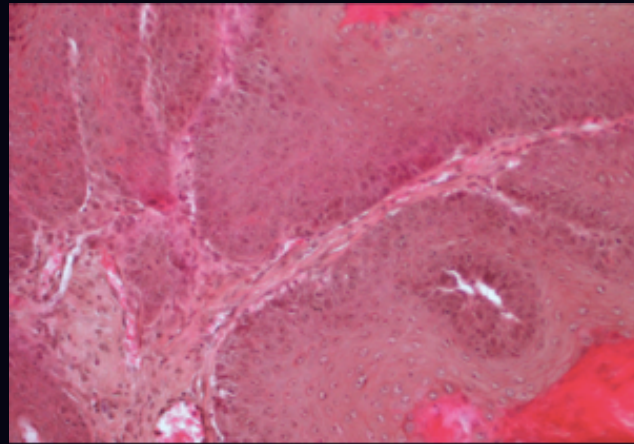




# Summer Course

## Module III



## Mouse Pathology



Copenhagen, Denmark 23<sup>rd</sup>– 27<sup>th</sup> August , 2021

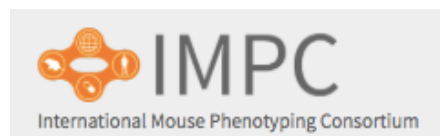


**PATHBIO** ([pathbio.org](http://pathbio.org)) is an EU-funded ERASMUS Knowledge Alliance for “Precision Pathobiology for Disease Models”, including major European Universities, 5 European “Mouse clinics” for high-throughput phenotyping of mice, and major mouse providers (Charles River, JAX, TCP). Supported by the INFRAFRONTIER network ([infrafrontier.eu](http://infrafrontier.eu)) and the IMPC ([mousephenotype.org](http://mousephenotype.org)), PATHBIO will provide courses and online teaching material for mouse embryology and anatomy, mouse pathology, and for imaging.

August 23-27, 2021, the third Mouse Pathology course will take place. This course will be via zoom, due to the travel restrictions and social distancing requirements caused by the corona virus pandemic.

Aim is to provide Master Students, PhD students, and post docs with **basic and expert knowledge in mouse pathology**, helping them to better analyze mice with disease phenotypes. Special emphasis will be given to **comparison of mouse and human pathology** and to **digital pathology**.

At this course expert pathologists and researchers from Europe, US, and Canada will give lectures and discuss with the participants different aspects of mouse pathology including specific disease phenotypes and models, quantitative digital pathology, mouse genome informatics, and basic histology. There will be also an opportunity for the participants to discuss the phenotype of their mice with expert pathologists.





### **Application**

Please send an E-mail with your CV and a short description of your interest in the course to Cord Brakebusch ([cord.brakebusch@bric.ku.dk](mailto:cord.brakebusch@bric.ku.dk)). You will then be provided later with a zoom link and a password to attend the course and with the final course program.

### **Discuss your mouse**

If you are interested to discuss pathological issues of mice of your interest with the course experts please contact Cord Brakebusch ([cord.brakebusch@bric.ku.dk](mailto:cord.brakebusch@bric.ku.dk)).



## Monday, August 23

- 8.30-9.00**            **Introduction**
- 9.00-10.00**            The mouse as a model system for human disease  
**Cord Brakebusch, University of Copenhagen**
- 10-12**                    Eye diseases  
**Jesus Ruberte, Universitat Autònoma de Barcelona**
- 12-13**                    **Lunch break**
- 13-14**                    Introduction to mouse pathology  
**John Sundberg, JAX**
- 14-15**                    Genetic based skin diseases  
**John Sundberg, JAX**
- 15-15.30**                **Walk and talk with a speaker**  
**John Sundberg**
- 15.30-16.30**            Bone diseases  
**Peter Vogel, St. Jude's**
- 16:30-17:30**            Mouse necropsy  
**TBA**



**Tuesday, August 24**

- 8.30-9.30** Spontaneous juvenile pathologies  
**James Bailey, Charles River**
- 9.30-10** Walk and talk with a speaker  
**(Cord Brakebusch)**
- 10-11** Studying human cancer in mice  
**Cord Brakebusch, University of Copenhagen**
- 11-12** Basic histology of cancer  
**Cord Brakebusch, University of Copenhagen**
- 12-13** Lunch
- 13-14** Tooth diseases  
**Peter Vogel, St. Jude's**
- 14-15** Mouse Genome Informatics  
**Karen Svenson, JAX**
- 15-15.30** Walk and talk with a speaker  
**(Karen Svenson)**
- 15.30-16.30** "Off-target effects" in xenotransplanted mice  
**Laura Janke, St. Jude's**
- 16.30-17.30** Discussion of selected mice of the participants  
**John Sundberg, JAX; Alys Bradley, Charles River; Peter Vogel, St. Jude's**



**Wednesday, August 25**

- 8.30-9.30** Spontaneous cancers  
**Alys Bradley, Charles River**
- 9.30-10** **Walk and talk with a speaker**
- 10-11** Tumorigenesis studies  
**Alys Bradley, Charles River**
- 11-12** Tumor PDX models  
**Alys Bradley, Charles River**
- 12-13** **Lunch**
- 13-14** Neuromuscular diseases  
**Peter Vogel, St. Jude's**
- 14-15** Mouse models and resources  
**Karen Svenson, JAX**
- 15-15.30** **Walk and talk with a speaker  
(Peter Vogel)**
- 15.30-16.30** Ciliopathies  
**Peter Vogel, St. Jude's**



**Thursday, August 26**

- 8.30-9.30** Immune response: human vs mouse  
**Cord Brakebusch, University of Copenhagen**
- 9.30-10** **Walk and talk with a speaker**
- 10-11** Basic histology of inflammation  
**Cord Brakebusch, University of Copenhagen**
- 11-12** Fibrosis  
**James Baily, Charles River**
- 12-13** **Lunch**
- 13-14** Mouse models for diabetes and metabolic syndrome-induced obesity  
**Julia Calzada-Wack, Helmholtz Institute Munich**
- 15-15.30** **Walk and talk with a speaker**
- 15.30-16.30** The role of the microbiome  
**Karen Svenson, JAX**



**Friday, August 27**

- 8.30-9.30**            Ontology and informatics  
**Paul Schofield, University of Cambridge**
- 9.30-10**             **Walk and talk with a speaker**  
**(Paul Schofield)**
- 10-11**                Introduction to Digital Pathology  
**Adrian Sanz, Helmholtz Institute Munich**
- 11-12**                Spatial Transcriptomics  
**Kyyoung Jae Won, University of Copenhagen**
- 12.00-13.00**        **Lunch**
- 13-15**                Genetic background and phenotype  
**Fuad Iraqi, Tel Aviv University**
- 15-15.30**           **Walk and talk with a speaker**  
**(Fuad Iraqi)**
- 15.30**                Wrap-up and Goodbye  
**Cord Brakebusch, University of Copenhagen**



SPEAKER	INSTITUTION
Baily, James	
Bradley, Alys	
Brakebusch, Cord	
Calzada-Wack, Julia	
Iraqi, Fuad	
Janke, Laura	
Ruberte, Jesus	
Sanz, Adrian	
Schofield, Paul	
Sundberg, John	
Svenson, Karen	
Vogel, Peter	
Won, Kyoung Jae	